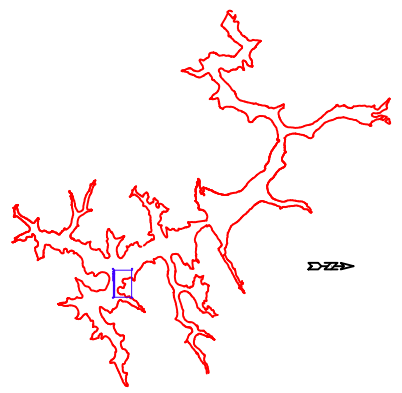


- LEGEND**
- CONCRETE MONUMENT SET
 - CONCRETE MONUMENT FOUND
 - MONUMENT LINE
 - 2466 CONTOUR LINE
 - 2462 CONTOUR LINE
 - 25 FT. OFFSET LINE FROM 2462
 - 2460 CONTOUR LINE
 - BLDG. AREAS
 - BLDG. FOOTPRINTS
 - TOWN CENTER
 - TOWN RESIDENTIAL
 - TOWN CENTER
 - MONUMENT TO BE SET
 - MONUMENT TO BE SET
 - REBAR WITH ALUMINUM CAP SET
 - 2" BRASS DISC SET
- CONTOURS ARE AT 2 FT. INTERVALS REFERENCED TO THE STAFF GAUGE AT THE PENNSHOCK.



VICINITY MAP

SURVEY CALLS

CONC.MON. NO.	BEARING	DISTANCE
Y2-S3C	S 34°57' W	352.99'
S3C-S3D	N 55°52' W	45.68'
S3D-S3B	S 35°17' W	183.72'
S3B-S3A	S 04°34' E	121.99'
S3A-S3	N 78°50' E	81.09'
S3-Y4	S 11°18' E	667.01'
Y4-Y5	S 65°34' E	248.35'
Y5-Y6	N 59°42' E	388.43'
Y6-N365	S 63°36' E	368.78'
N365-N123	S 83°43' E	178.02'
Y123-N123A	S 25°02' E	285.98'
Y123A-N123B	S 63°43' W	378.10'
Y123B-S312D	S 18°18' W	22.27'
S312D-S312C	S 48°40' E	258.48'
S312C-S312B	S 80°37' E	218.22'
S312B-S312A	N 72°26' E	214.79'
SS12A-SS12	N 37°03' E	160.08'
SS12-SS11	N 36°38' E	99.82'
SS11-SS10	N 06°22' W	147.20'
SS10-SS9	N 58°47' W	115.01'
SS9-Y126	N 00°22' E	306.88'
Y126-Y127	N 66°19' E	442.77'
Y127-N128	N 17°23' W	304.19'
Y128-N367	N 36°44' E	718.19'

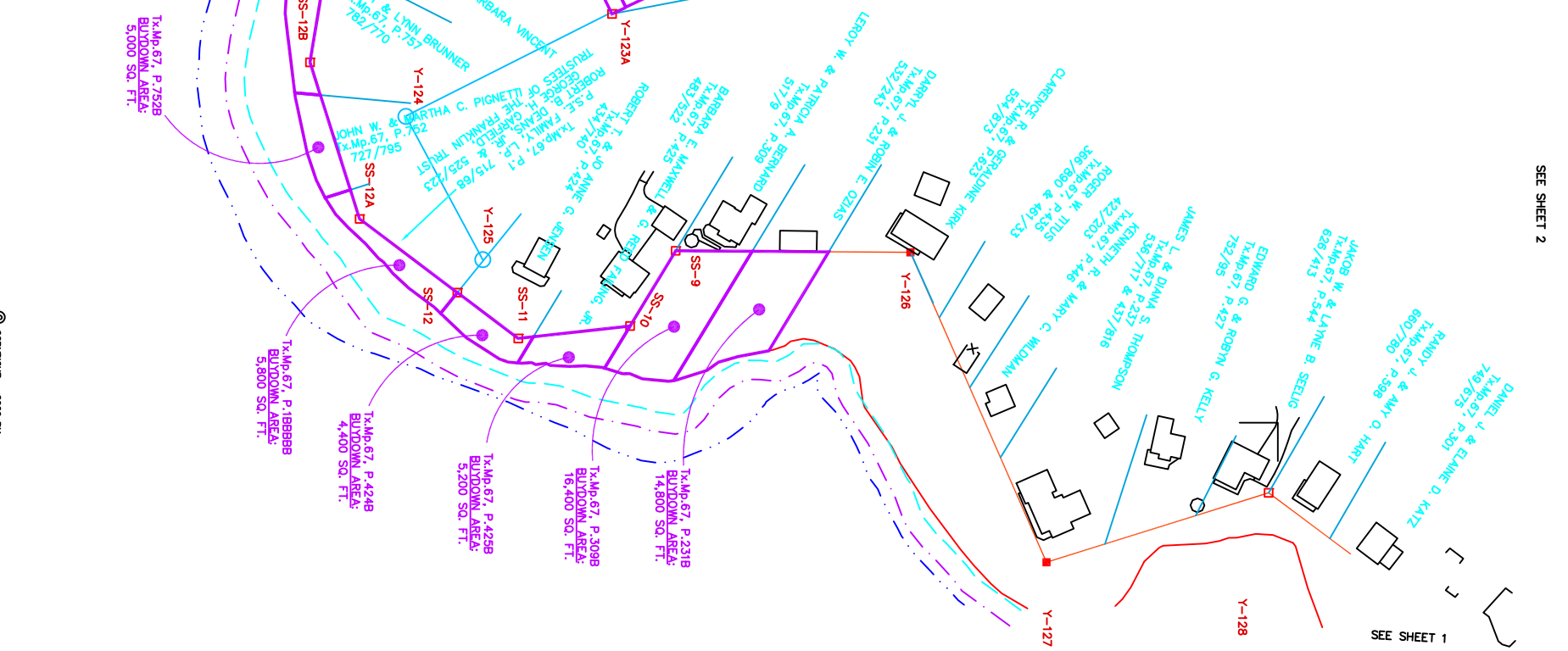
PENELEC CALLS

CONC.MON. NO.	BEARING	DISTANCE
Y-2	S 32° 34' W	355.60 FT.
S-30	N 51° 22' W	45.90 FT.
S-30	S 39° 03' W	184.30 FT.
S-30	S 00° 43' E	120.90 FT.
S-3A	N 82° 30' E	81.35 FT.
S-3	S 11° 33' E	776.60 FT.
Y-4	S 67° 33' E	248.00 FT.
Y-6	N 57° 37' E	368.70 FT.
N-365	S 87° 37' E	188.70 FT.
Y-123	S 28° 45' E	565.62 FT.
Y-123A	S 62° 00' W	378.27 FT.
Y-123B	S 16° 32' E	22.15 FT.
SS-12D	S 50° 23' E	258.48 FT.
SS-12C	S 82° 19' E	218.21 FT.
SS-12B	N 70° 44' E	214.78 FT.
SS-12A	N 35° 20' E	160.08 FT.
SS-12	N 35° 16' E	99.82 FT.
SS-11	N 08° 00' W	147.10 FT.
SS-10	N 50° 28' W	115.19 FT.
SS-9	NORTH	307.85 FT.
Y-126	N 64° 36' E	442.80 FT.
Y-127	N 19° 02' W	306.88 FT.
Y-128	N 35° 28' E	720.00 FT.

COORDINATE SCHEDULE

Mon.	North	East
N35	668770.61	666819.36
N45	668639.29	667476.99
Y123D	668390.29	667420.50
SS12D	668411.43	667427.49
Y123B	668959.60	667140.27
Y6	668973.47	668393.32
Y4	668456.16	668190.98
SS11	668456.16	668190.98
SS10	668456.16	668190.98
SS9	668662.06	668078.33
Y126	668968.90	668078.34
Y127	669146.77	668463.76
Y128	669437.07	668392.89
S3B	669623.65	668375.21
S3A	669517.77	668464.48
S3	669502.05	668384.92
SS12A	669748.03	668319.13
SS12	669813.02	668481.32
SS11	669891.39	668548.52
SS10	669857.81	667766.53
SS9	668219.57	667614.58
SS12A	668183.98	667829.88
SS12B	668248.81	668034.64
SS12C	668376.59	668131.08

- DEEP CREEK LAKE SURVEY DATA**
- HORIZONTAL DATUM
 - HORIZONTAL DATUM = LAMBERT MAD 83 DATUM
 - COMBINED SCALE FACTOR = 0.999999999
 - APPROXIMATE COMBINED SCALE FACTOR = 0.999999
 - VERTICAL DATUM
 - VERTICAL DATUM = LAKE DATUM
 - LAKE DATUM = NAVD 88 DATUM - 1.80 FT.



© COPYRIGHT - 2009 BY MORGAN C. FRANCE L.S., P.E. ALL RIGHTS RESERVED

DRAWN BY: SUSAN N. EVANS PERRANDI and MARGARET A. JORDAN DATE: PLND3 1231\DATA\PROJ\PROJ\1231\PLND3	APPROVED BY: MORGAN C. FRANCE DATE: 6/30/00 at 9:05	REVISIONS 2/27/00 3/07/01 3/16/01	Prepared By: MORGAN C. FRANCE, L.S., P.E. DEPT. OF GENL. SERVICES - REAL ESTATE 300 West Park Lane, Room 601 Baltimore, Maryland 21201 (301) 334-2309	PROJECT: DEEP CREEK PROJECT BUY DOWN SURVEY	SHEET NAME: DRAWING 3, POLAND RUN COVE	SHEET NO.: 3
--	--	--	---	---	--	--------------

SEE SHEET 4

SEE SHEET 2

SEE SHEET 1